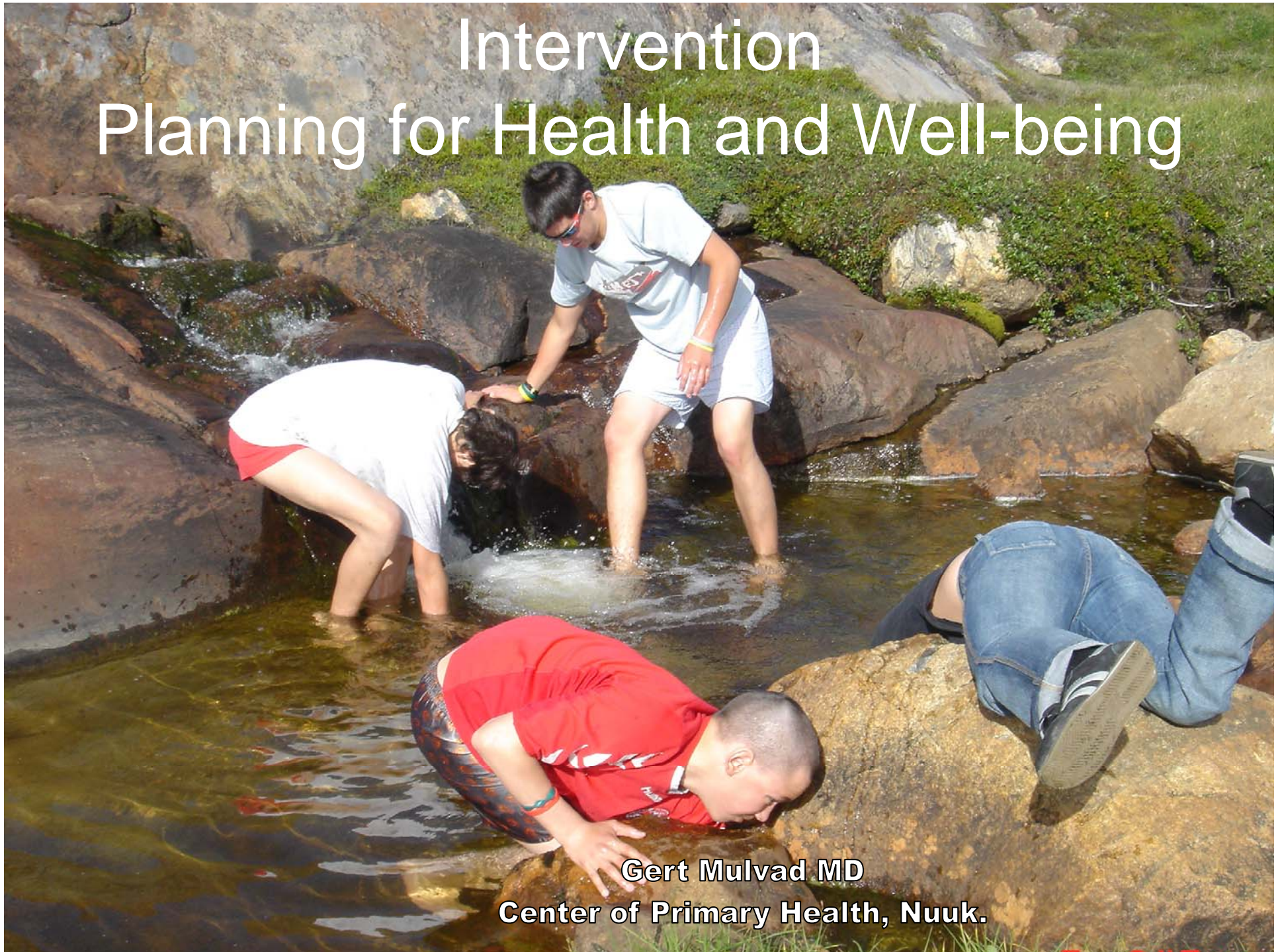


Intervention Planning for Health and Well-being

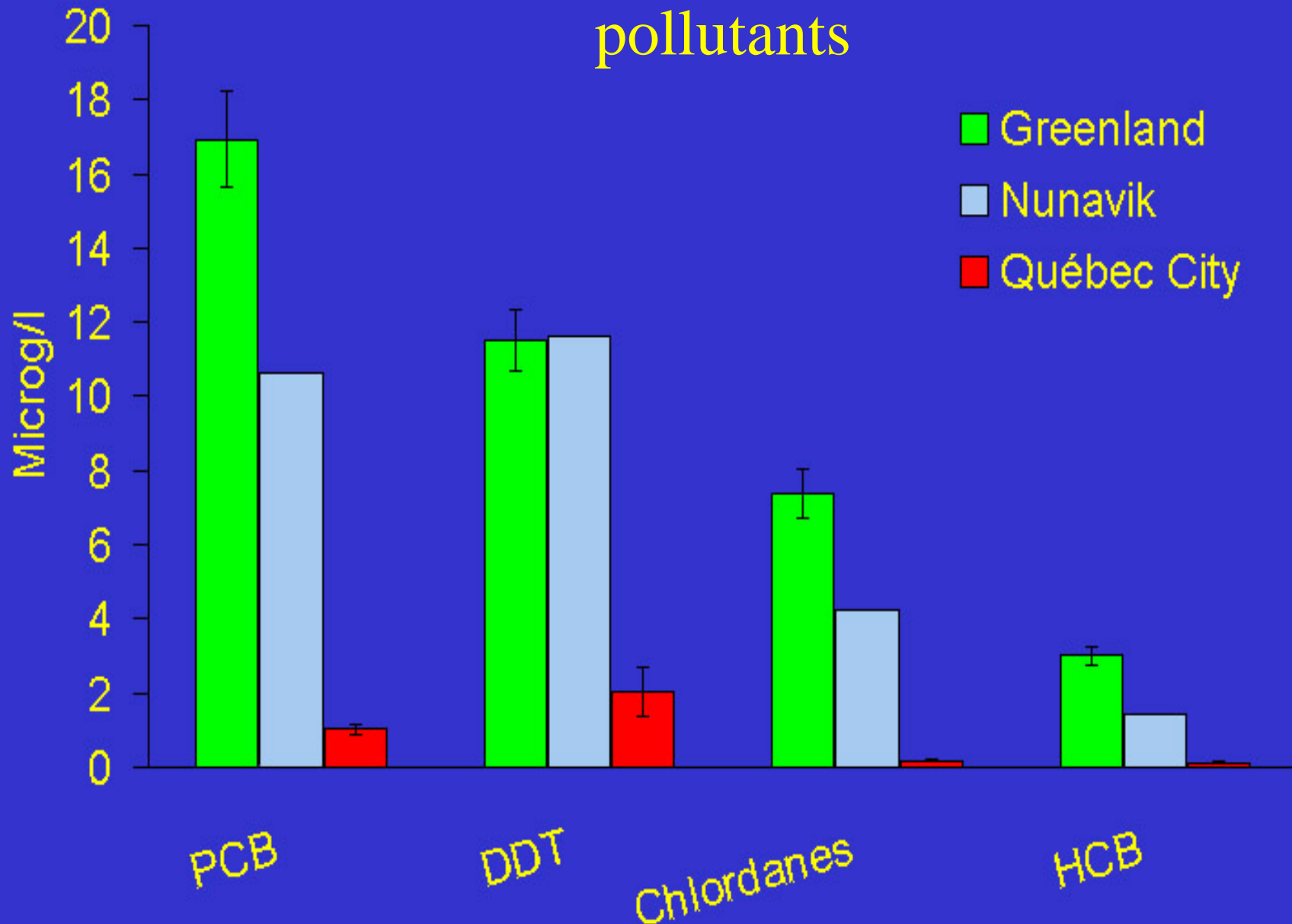


Gert Mulvad MD
Center of Primary Health, Nuuk.

Living Condition

- Nordic Record
- Suicide (5-6 time compared to Finland)
- Abortion (3-4 time compared to Nordic countries)
- Drinking (Greenlanders drink more alcohol compared to Nordic population)

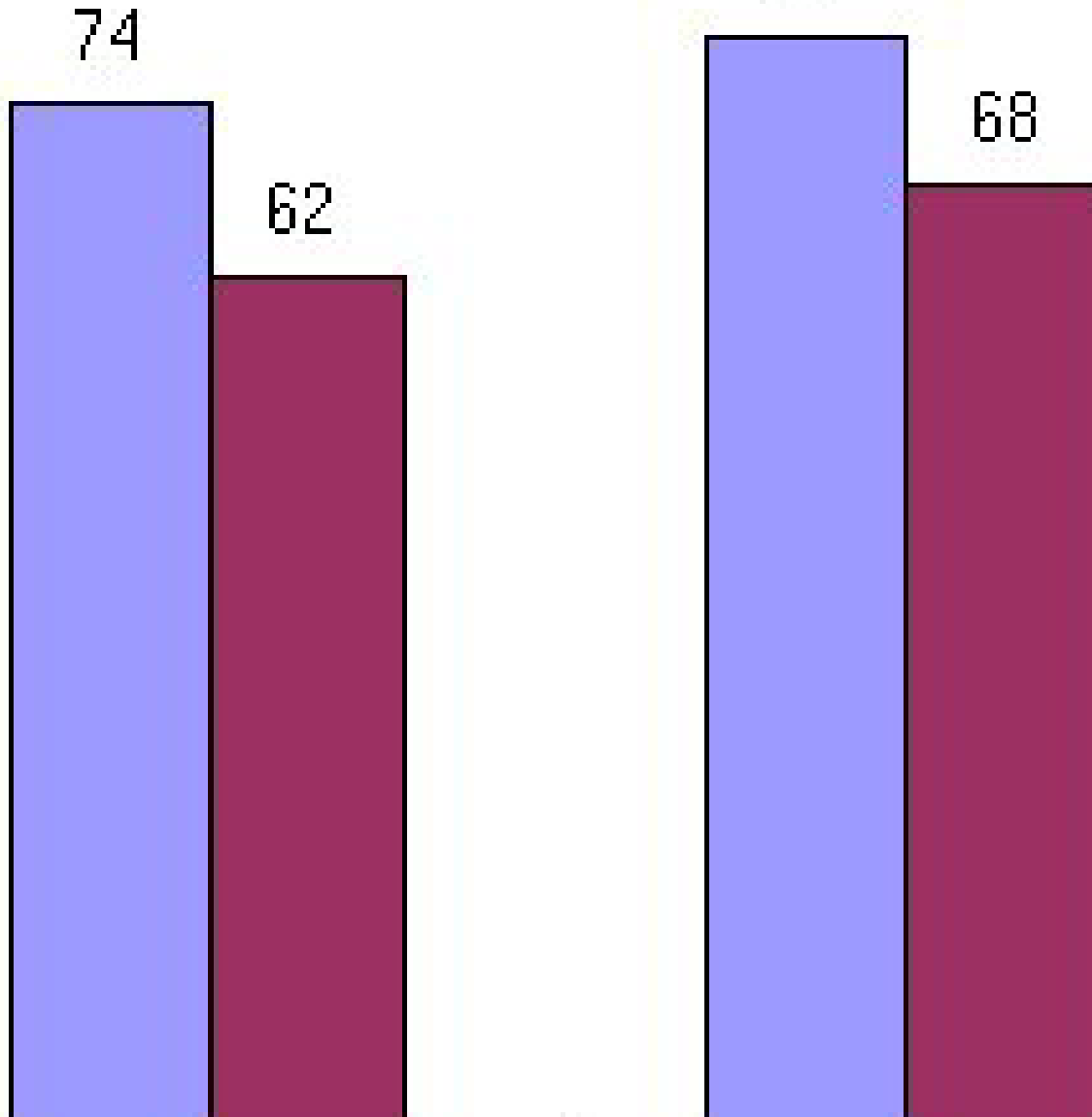
Plasma concentrations of persistent organic pollutants

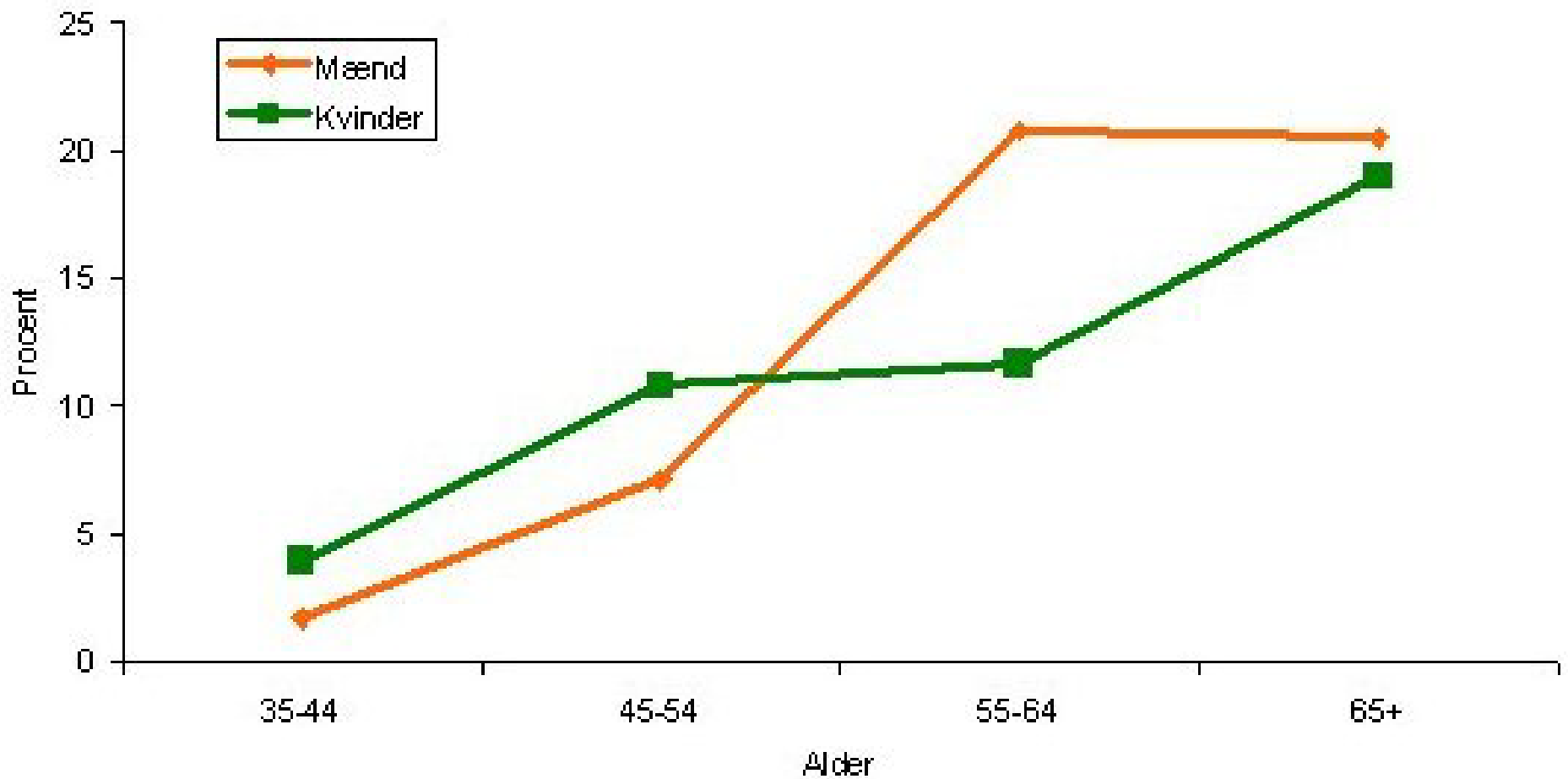


Expected life span of year
Denmark and Greenland

men

Women





Type-2 diabetes among men and women in Greenland

Bjerregaard et al.

Duties of the Public Health System

- The most important duties of the public health system are:
- To improve the health of the population.
- To prevent disease and morbidity.
- To examine, treat and take care of individuals, who suffer from disease.

Social development and its impact on health patterns.

- There has been very little analysis of the consequences of the accelerated development, the last decade, and its influence on the society.
- The traditional family structure has been transformed
- Norms and value systems have also changed.
- Social and mental health problems.
- Social inequality
- Globalisation



Health promotion and intervention followed by research.

Health services research

- The balance between investment in health promotion and treatment, is not optimal.
- What is the best means for organising the health care system in a society with the cultural and geographical background of Greenland?
- New interventions and health promotion initiative need research-based evaluation.



Intervention Best Practic

- Infectious diseases: TB and STD, how to prevent.
- Living Condition: Diabetes, Adipositas and Ischaemic heart diseases, how to react.
- Living Condition and Well-beeing: Start with the children.
- Employer and health responsibility: Royal Greenland.



TB and other infectious diseases

Infectious diseases: TB and STD, how to prevent.

- Local health workers
- Local knowledge
- Track down the infectious diseases



Living condition/diseases: Diabetes, Adipositas and Ischaemic heart diseases, how to react.

Family

Child care

School

Foodstore

Policy



Children in Greenland and Greenland for the Children. Family health and social welfare.

- Often ill health is a result of and influenced by social welfare and/or chronic illness that has developed over longer period of time.
- Creating a better understanding of the relationship between the social, cultural and environmental health parameters.
- Child care, school, health and social system have to be more interfered
- Public Clinic
- School: dialog instead of violence



Royal Greenland Choose a Healthy Custom

Walk and run

Drink water

No smoking

Eat more fish

Royal Greenland

Academy

